



Iowa Ag News – Cattle on Feed

Upper Midwest Region - Iowa Field Office · 210 Walnut Street Ste 833 · Des Moines IA 50309 · (515) 284-4340 · (800) 772-0825
fax (855) 271-9802 · www.nass.usda.gov

Cooperating with the Iowa Department of Agriculture and Land Stewardship

January 24, 2014

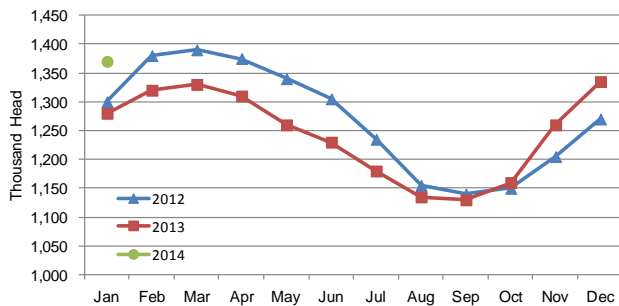
Media Contact: Greg Thessen

Cattle and calves on feed for slaughter market in Iowa for all feedlots totaled 1,370,000 on January 1, 2014 according to the USDA, National Agricultural Statistics Service, Iowa Field Office. The inventory is up 3 percent from December 1, 2013 and up 7 percent from January 1, 2013. Feedlots with a capacity greater than 1,000 head had 620,000 head on feed, up 2 percent from last month but unchanged from last year. Feedlots with a capacity less than 1,000 head had 750,000 head on feed, up 3 percent from last month and up 14 percent from last year.

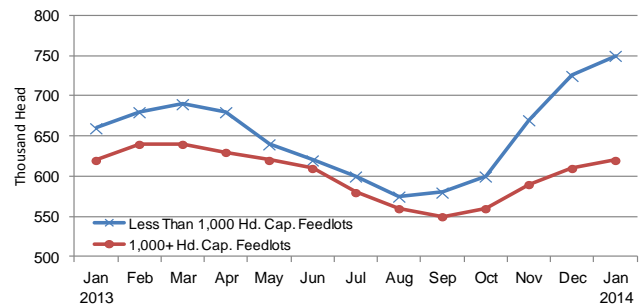
Placements during December totaled 206,000 head, a decrease of 25 percent from last month but up 27 percent from last year. Feedlots with a capacity greater than 1,000 head placed 96,000 head, down 21 percent from last month but up 17 percent from last year. Feedlots with a capacity less than 1,000 head placed 110,000 head. This is down 29 percent from last month but up 38 percent from last year.

Marketings for December were 164,000 head, down 16 percent from last month but up 14 percent from last year. Feedlots with a capacity greater than 1,000 head marketed 84,000 head, down 16 percent from last month but up 24 percent from last year. Feedlots with a capacity less than 1,000 head marketed 80,000 head, down 16 percent from last month but up 5 percent from last year. Other disappearance totaled 7,000 head.

Cattle on Feed, Inventory on all Feedlots, Iowa: 2012-2014



Cattle on Feed, Inventory by Feedlot Capacity, Iowa: Current Month & Past 12 Months



All Cattle on Feed, Iowa

Item	Lots 1,000+ Head	Lots Less than 1,000 Head	All Lots
	(1,000 Head)	(1,000 Head)	(1,000 Head)
Cattle on Feed, December 1, 2013	610	725	1,335
December Placements	96	110	206
December Marketings	84	80	164
December Other Disappearance	2	5	7
Cattle on Feed, January 1, 2014	620	750	1,370

Cattle on Feed: Number on Feed, Placements, Marketings, and Other Disappearance by Month, 1,000+ Capacity Feedlots

[Cattle and calves on feed are animals for slaughter market being fed a ration of grain or other concentrates and are expected to produce a carcass that will grade select or better.]

State	Cattle on Feed January 1			Placements during December			Marketings during December			December Disappearance other than Slaughter ¹		
	2013	2014	'14 as % of '13	2012	2013	'13 as % of '14	2012	2013	'13 as % of '14	2012	2013	'13 as % of '14
	(1,000 Head)	(1,000 Head)	(Percent)	(1,000 Head)	(1,000 Head)	(Percent)	(1,000 Head)	(1,000 Head)	(Percent)	(1,000 Head)	(1,000 Head)	(Percent)
Arizona	272	274	101	29	28	97	23	28	122	1	1	100
California	480	510	106	50	59	118	55	52	95	5	2	40
Colorado	1,000	960	96	140	150	107	155	150	97	5	10	200
Idaho	230	220	96	26	32	123	40	36	90	1	1	100
Iowa	620	620	100	82	96	117	68	84	124	4	2	50
Kansas	2,110	2,010	95	365	360	99	425	385	91	20	15	75
Nebraska	2,480	2,400	97	390	405	104	425	420	99	15	15	100
Oklahoma	345	260	75	52	43	83	49	45	92	3	3	100
South Dakota ..	230	230	100	34	43	126	33	30	91	1	3	300
Texas	2,720	2,440	90	415	370	89	380	420	111	15	20	133
Washington	247	201	81	25	34	136	38	37	97	1	3	300
Other States	459	468	102	56	61	109	54	49	91	3	2	67
United States ..	11,193	10,593	95	1,664	1,681	101	1,745	1,736	99	74	77	104

¹Includes death loss, movement from feedlots to pasture, and shipments to other feedlots for further feeding.

Cattle on Feed: Number on Feed by Class, 1,000+ Capacity Feedlots by Quarter, State, and United States, 2013-2014

State	Steers & Steer Calves			Heifers & Heifer Calves			Cows & Bulls		
	January 1, 2013	October 1, 2013	January 1, 2014	January 1, 2013	October 1, 2013	January 1, 2014	January 1, 2013	October 1, 2013	January 1, 2014
	(1,000 Head)	(1,000 Head)	(1,000 Head)	(1,000 Head)	(1,000 Head)	(1,000 Head)	(1,000 Head)	(1,000 Head)	(1,000 Head)
Arizona	264	261	268	8	7	6	0	0	0
California	405	455	470	75	44	40	0	1	0
Colorado	620	560	615	370	305	340	10	5	5
Idaho	126	115	125	99	90	91	5	5	4
Iowa	420	355	425	200	205	195	0	0	0
Kansas	1,160	1,060	1,060	945	935	945	5	5	5
Nebraska	1,530	1,390	1,545	930	810	820	20	10	35
Oklahoma	220	190	170	125	95	90	0	0	0
South Dakota ..	113	104	125	91	67	80	26	9	25
Texas	1,720	1,540	1,510	999	919	929	1	1	1
Washington	147	109	120	96	72	77	4	3	4
Other States ...	322	303	347	132	113	120	5	1	1
United States ..	7,047	6,442	6,780	4,070	3,662	3,733	76	40	80

United States Cattle on Feed Down 5 Percent

Cattle and calves on feed for slaughter market in the United States for feedlots with capacity of 1,000 or more head totaled 10.6 million head on January 1, 2014. The inventory was 5 percent below January 1, 2013. The inventory included 6.78 million steers and steer calves, down 4 percent from the previous year. This group accounted for 64 percent of the total inventory. Heifers and heifer calves accounted for 3.73 million head, down 8 percent from 2013.

Placements in feedlots during December totaled 1.68 million, 1 percent above 2012. Net placements were 1.60 million head. During December, placements of cattle and calves weighing less than 600 pounds were 485,000, 600-699 pounds were 420,000, 700-799 pounds were 391,000, and 800 pounds and greater were 385,000. Marketings of fed cattle during December totaled 1.74 million, 1 percent below 2012.

The complete report can be found under **Publications** on the USDA NASS website at www.nass.usda.gov.